

BUILDING A LANDSCAPE_BUILDING

reg n° 176
top

The topography defines always a particular condition. The slope designs organically the spatial development of the hill, with multiple changes of direction, opening the views to the surroundings features. This territory is more natural than urban, almost like being in the country. The form of the hill appears like a "dorsal profile" of the landscape, an inclined way of inhabitation. The articulation of terraces in one side and the hostility of the geometry of the downhill where a little forest take place are the main features of the parcels. The aim of the project is to construct this "dorsal profile", beginning from an elementary building unit, through repetition and articulation this simple volumens contain the ground and design the changes of level. Is a volumetric wall.

The topography is a natural and dynamic sign. Here architecture becomes an organic feature that construct the inner expression of the land.

A dialectic landscape, the presence of a natural one in contrast with a geometrical one.

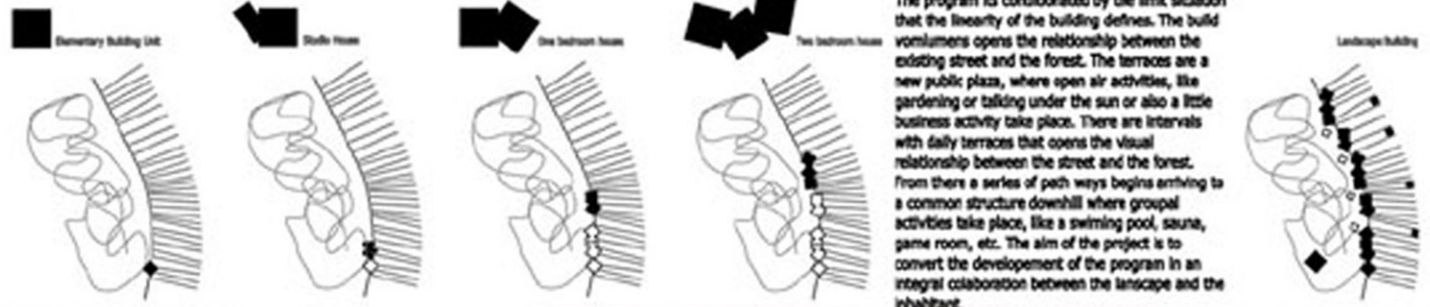
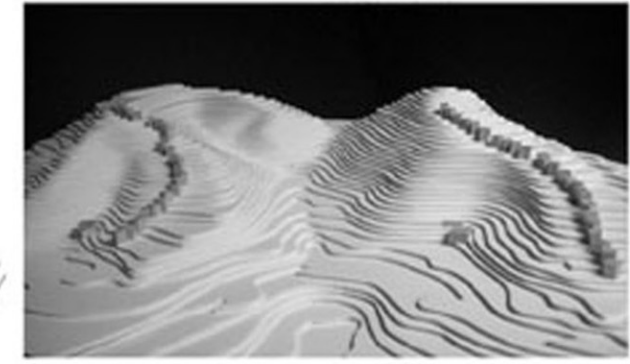
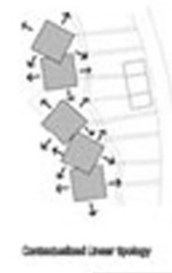
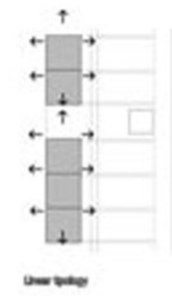
As a wall that allows to inhabit the slope. The building is a limit between natural features, a dorsal spine in the territory.



The terraces appears from the volumens, maintaining the almost natural development of the slope, defining a space to be at the open, like an scalinated plaza. Is a landscape project, a landscape building that brings out the organic character of the territory. The building is a negotiation element between the interior, the exterior and nature. Is a building that race out from the ground, from the attention to the topography. A build limit between the naturalistic and the artificial geometry of the city. This new landscape transform the ground in a place to inhabit, and in its continuity appears as a common sign. A concrete and direct architecture in this territory that today lays between the country and the city. This architectural model defines a linear topology (street_car, jarden_square, house_terrace, forest_park) that gets contextualized and debates continually between the artificial and the naturalistic condition of the territory. The project is an organic model, thats take the human condition and the landscape to build a place.



- GENERAL PLAN PHASE A scale 1:400
- 1 terrace terrace
 - 2 forest (public park)
 - 3 common services (spa, gym, games room)
 - 4 walk path
 - 5 study terrace
 - 6 private parking
 - 7 local street and visit parking
 - 8 extension unit
 - 9 support structure (storage, study, basement)



The program is conditioned by the limit situation that the linearity of the building defines. The build volumens opens the relationship between the existing street and the forest. The terraces are a new public plaza, where open air activities, like gardening or talking under the sun or also a little business activity take place. There are intervals with daily terraces that opens the visual relationship between the street and the forest. From there a series of path ways begins arriving to a common structure downhill where group activities take place, like a swimming pool, sauna, game room, etc. The aim of the project is to convert the development of the program in an integral collaboration between the landscape and the inhabitant.



